

Bite Fork Clamp Assembly Instructions

Item #FB400031 (used with Facebow #FB400000)

1



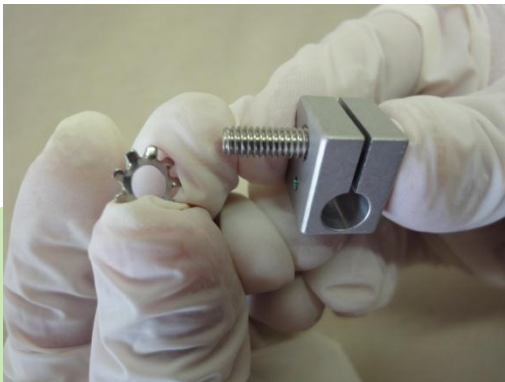
The four components of the toggle clamp assembly: the upper clamp, lower clamp, allen screw and lock washer.

2



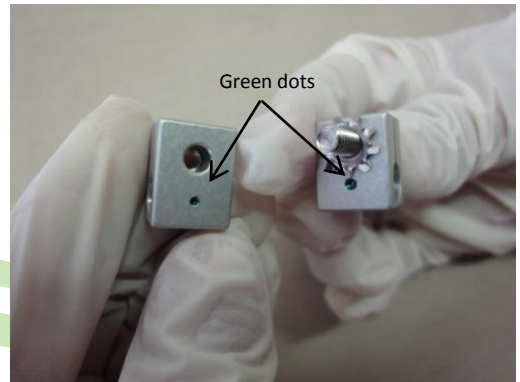
Insert the allen screw into the upper clamp. Note that the upper clamp has a large recessed area for the screw head to fit in.

3



Place the lock washer over the screw (the washer will be between the upper and lower clamps when fully assembled).

4



Ensure that the threaded portion of the hole on the lower clamp faces out (the lower clamp is threaded on one side only). On newer versions of the clamps, the small green dots (pictured above) will face each other when properly assembled.

5



Screw the upper and lower clamps together. Do not firmly tighten the clamps until the bite fork and stem assembly are inserted.

6



The final clamp assembly should look as pictured above and is ready to use again.